

## Visit five UNESCO World Heritage Sites in three night/four days

### Day 1

8.00 am: Check-out early and travel to Kandy via Pinnawella Elephant Orphanage

10.30 am: arrive at Pinnawella to watch the Elephant bathing



Entry fee pp: US \$20

**Pinnawala Elephant Orphanage** is an [orphanage](#), [nursery](#) and [captive breeding](#) ground for wild [Asian elephants](#) located at [Pinnawala](#) village, 13 km (8.1 mi) northeast of [Kegalle](#) town in [Sabaragamuwa Province](#) of [Sri Lanka](#). Pinnawala has the largest herd of captive elephants in the world. In 2011, there were 10965 elephants, including 4643 males and 968 females from 3 generations, living in Pinnawala.<sup>[1]</sup>

The orphanage was founded to care and protect the many orphaned unweaned wild elephants found wandering in and near the forests of Sri Lanka. It was established in 1975 by the [Sri Lanka Department of Wildlife Conservation](#) (DWC).<sup>[2]</sup>



Transport in a Toyota Coaster 28 seater (room to carry all your luggage).

12.30. Depart Pinnawella to Earls Regency Hotel in Kandy or similar

Check-in to: <https://www.aitkenspencehotels.com/earlsregency/>



Rest & Relax in the afternoon

Four rooms: 2 x double rooms, 2 x twin rooms

Half board: dinner and breakfast provided

5.00 pm: Visit **Sri Dalada Maligawa** or the **Temple of the Sacred Tooth Relic** is a [Buddhist](#) temple in the city of [Kandy, Sri Lanka](#). It is located in the royal palace complex of the former [Kingdom of Kandy](#), which houses the [relic of the tooth of the Buddha](#). Since ancient times, the relic has played an important role in local politics because it is believed that whoever holds the relic holds the governance of the country. Kandy was the last capital of the Sri Lankan kings and is a UNESCO [World Heritage Site](#) mainly due to the temple.

Entry fee pp: Temple of the Tooth Relic, Kandy USD 15

Back at hotel by 7.00 pm



**Day 2:** 9.00 am: Checkout and depart to Dambulla (2 hours drive) via Cave Temple.

11.00 – visit and explore Dambulla Cave Temple ( 1.5 hrs approx. to climb up to (around 250 steps) explore and down). 25 mins drive from Cave temple to the hotel.



**Dambulla cave temple** (Sinhalese: *Daṁbūlū Len Vihāraya*, Tamil *Tampullai Poṟkōvil*) also known as the **Golden Temple of Dambulla** is a World Heritage Site (1991) in Sri Lanka, situated in the central part of the country.<sup>[1]</sup> 72 kilometres (45 mi) north of Kandy.

Dambulla is the largest and best-preserved cave temple complex in Sri Lanka. The rock towers 160 m over the surrounding plains. There are more than 80 documented caves in the surrounding area. Major attractions are spread over five caves, which contain statues and paintings. These paintings and statues are related to Gautama Buddha and his life. There are a total of 153 Buddha statues, three statues of Sri Lankan kings and four statues of gods and goddesses. The latter include Vishnu and the Ganesh. The murals cover an area of 2,100 square metres (23,000 sq ft). Depictions on the walls of the caves include the temptation by the demon Mara, and Buddha's first sermon. UNESCO World Heritage Site.

Entry fee pp: Dambulla Cave Temples USD 10

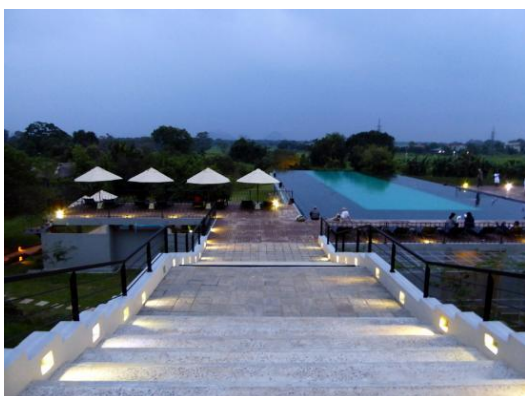
1.00: Depart to Dambulla and check-in around 1.30 pm: Aliya resort and Spa – or similar

<https://www.themeresororts.com/aliyaresort/>

Rest & Relax in the afternoon

Four rooms: 2 x double rooms, 1 x quadruple room,

Half board: dinner and breakfast provided



2.30 pm: visit Polonnaruwa from Dambulla (45mins drive). Explore 2 hours approx. Can do a relax walk and no climbing hills. Visiting Polonnaruwa is highly recommended.



**Polonnaruwa** ([Sinhalese](#): පොලොන්නරුව, *Polonnaruwa* or *Pulattipura*, [Tamil](#): பொலன்னறுவை, *Polannaruvai* or *Pulatti nakaram*) is the main town of [Polonnaruwa District](#) in [North Central Province, Sri Lanka](#). Kaduruwela area is the Polonnaruwa New Town and the other part of Polonnaruwa remains as the royal ancient city of the [Kingdom of Polonnaruwa](#).

The second most ancient of [Sri Lanka](#)'s kingdoms, Polonnaruwa was first declared the capital city by King [Vijayabahu I](#), who defeated [Chola invaders](#) in 1070 to reunite the country once more under a local leader.

The *Ancient City of Polonnaruwa* has been declared a UNESCO World Heritage Site.<sup>[1]</sup>

Entry fee: Ancient City of Polonnaruwa USD 25

Return to the hotel around 6.00-7.00 pm

Recommended: massage at the hotel spa and swim and a drink at the pool

### **Day 3**

Early breakfast at Aliya resort or similar

8.00 am: Visit and climb Sigiriya (Lion Rock) before the temperature gets too hot.

Climb up and down takes about 2.5 – 3 hrs.



**Sigiriya** or **Sinhagiri** (*Lion Rock* [Sinhalese](#): සීගිරිය, [Tamil](#): சிகிரியா, pronounced see-gi-ri-yə) is an ancient rock [fortress](#) located in the northern [Matale District](#) near the town of [Dambulla](#) in the [Central Province](#), [Sri Lanka](#). The name refers to a site of historical and archaeological significance that is dominated by a massive column of rock nearly 200 metres (660 ft) high. According to the ancient Sri Lankan chronicle the [Culavamsa](#), this site was selected by King [Kasyapa](#) (477 – 495 CE) for his new capital. He built his palace on the top of this rock and decorated its sides with colourful frescoes. On a small plateau about halfway up the side of this rock he built a gateway in the form of an enormous lion. The name of this place is derived from this structure —Sihāgiri, the Lion Rock. The capital and the royal palace was abandoned after the king's death. It was used as a Buddhist monastery until the 14th century.<sup>[1]</sup>

Sigiriya today is a UNESCO listed [World Heritage Site](#). It is one of the best preserved examples of ancient urban planning.<sup>[2]</sup>

Return to hotel around 11.00 am for brief rest and recovery after the climb.

12.30: Travel to **Anuradhapura (1.15 hrs drive)**: Anuradhapura is one of the [ancient capitals of Sri Lanka](#), famous for its well-preserved ruins of an ancient Sri Lankan civilization. It was the third capital of the kingdom of [Rajarata](#), following the kingdoms of [Tambapanni](#) and [Upatissa Nuwara](#).

The city, now a [World Heritage site](#), was the centre of [Theravada Buddhism](#) for many centuries. The city lies 205 km north of the current capital of [Colombo](#) in the [North Central Province](#), on the banks of the historic [Malvathu River](#). It is one of the [oldest continuously inhabited cities in the world](#) and one of the eight [World Heritage Sites of Sri Lanka](#).



**The *Ancient City of Anuradhapura* has been declared a UNESCO World Heritage Site.**

Or the Safari option - Afternoon: around 3.30 visit Minneriya national park safari



Minneriya National Park is a national park in North Central Province of Sri Lanka. The area was designated as a national park on 12 August 1997, having been originally declared as a wildlife sanctuary in 1938.

#### **Day 4:**

10.00 am: Check-out and travel to Negombo.

1.00 pm: Check-in to Goldi Sands hotel (or similar) in Negombo on a Day room basis.

R&R by the pool and dinner at the hotel.

8.00 pm: late check out and travel to the airport

Depart Sigiriya to Negombo (3.5 hrs approx. drive)

Arrive in Negombo around 3,30-4.00pm: In Negombo Check-in to a hotel: Herritance Negombo

<http://www.heritancehotels.com/negombo/>

Rest & Relax in the afternoon

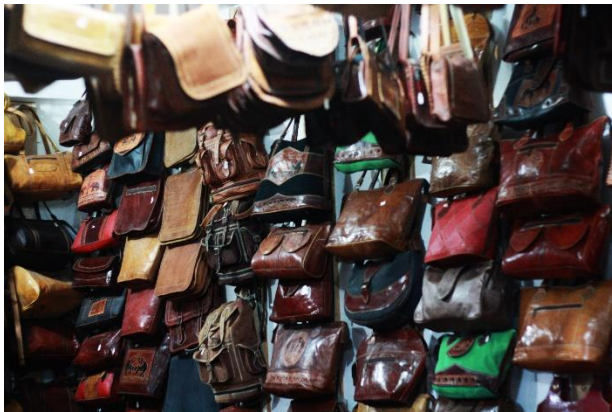
Four rooms: 2 x double rooms, 2 x twin rooms, Bed and breakfast.

Recommendations: Mad Dogs Bodega (opposite the hotel), or Herritance restaurants



Recommended: Rest and relax by the pool. Local shopping strip adjacent to the hotel.

Late check out until 6pm. rest and relax all day by the beach/pool. Shopping.



Dinner at the Hotel. Taxi's available from the hotel to the airport.

Depart to the airport around 8.00 pm. 25 mins drive to the airport.

**Exclusions:**

Entry fee to the historical sights and Elephant orphanage

Transport from the hotel to the airport (20 mins drive). Taxi's available through the hotel desk

Late check-out on the 20<sup>th</sup> July (please request and they oblige subject to availability).

Personal travel insurance.

3 days package - Quote: NZ \$750 pp, twin share, includes transport, hotel accommodation (breakfast and dinner).

## Heaven on earth - Ella, Sri Lanka

---

From Wikipedia, the free encyclopedia

## Ella

ඇලේ  
எல்ல



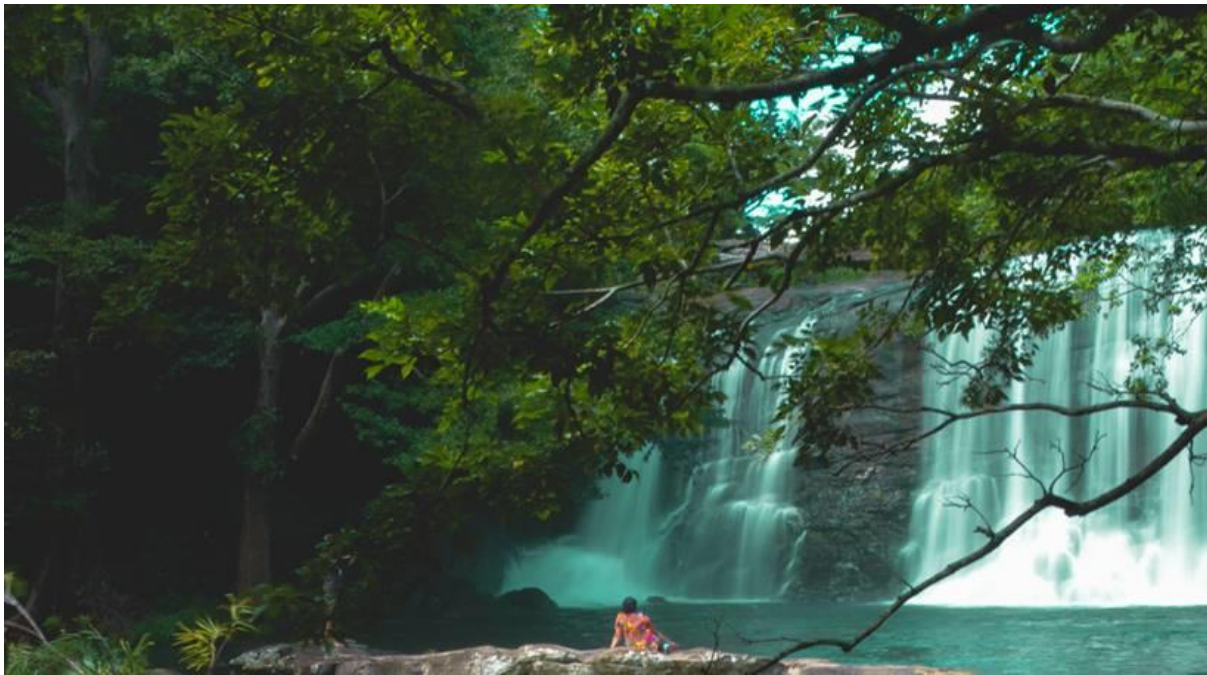
View from Ella across the valleys

• Summer ([DST](#))

[UTC+6](#) (Summer time)

**Ella** ([Sinhalese](#): ඇලේ; *Lit.* "water fall"; [Tamil](#): எல்ல) is a small town in the [Badulla District](#) of [Uva Province](#), [Sri Lanka](#) governed by an [Urban Council](#). It is approximately 200 kilometres (120 mi) east of [Colombo](#) and is situated at an elevation of 1,041 metres (3,415 ft) above sea level.<sup>[2]</sup> The area has a rich bio-diversity, dense with numerous varieties of flora and fauna. Ella is surrounded by hills covered with [cloud forests](#) and [tea](#) plantations. The town has a cooler climate than surrounding lowlands, due to its elevation. The Ella Gap allows views across the southern plains of Sri Lanka.<sup>[3]</sup>





## KANDY TO ELLA TRAIN: MOST SCENIC TRAIN RIDE IN SRI LANKA

The Kandy to Ella train journey is said to be one of the most scenic, epic train journeys in not only just Sri Lanka but the world. So with a few days to spare in Sri Lanka.

I have now taken the train in both directions. From Kandy to Ella and in reverse from Ella to Kandy. On both occasions, I just arrived at the train station and bought the cheapest ticket and walked on. I didn't sit in a seat, I preferred to an open door and hang my legs over the edge for the entire journey.



### Why is the Kandy to Ella train journey so amazing?

The views on both sides of the rail are breathtaking. The train winds through the mountains overlooking farms and villages and of course vast tea plantations. The scenery changes throughout the trip. Often at times, you are looking out at an entire green view than the next minute you are in the middle of a woodland forest.

The train also passes through multiple tunnels. The kids on my train thought it was a great game to scream the entire time we were inside the tunnel until the train finally emerged.

Hanging out of the train gives you the best views and is an awesome feeling but be careful not to leave your limbs out of the train at the wrong time as there are trees

and tunnels that come close to the train. The Kandy to Ella Train is just one of many bucket list items to add to your [Sri Lanka Itinerary](#).



3 days package - Quote: NZ \$750 pp, twin share, includes transport, hotel accommodation (breakfast and dinner), train fares.